

## Olive Pests

### Olive beetle:

Shiny yellow and black beetle 5mm long. Adult emerges in March and over winters then lays eggs on undersides of leaves in spring (August and September).

Lava mine between the leaf surfaces in summer (from September onwards) creating long streaks. Lava drop to ground and pupate when 4 mm long.

Adults feed on leaves creating holes. They also scar fruit.

Trees become ragged and defoliated.



### Olive tingitid (Olive lacebug)

Flattened grey, sucking, flying insect 4 mm long. Adult over winters then lays eggs in August and September. Nymphs appear from September through summer.

Adults and nymphs suck sap from leaves destroying leaf tissue and coating leaves with dark excrement. Leaves develop tiny yellow chlorotic spots and defoliate.

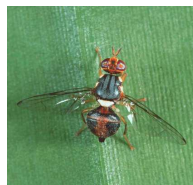
Also cause die back of young shoots.



### Olive fly:

Lays egg in fruit in January where maggots hatch eat, mature and drop to ground in winter to pupate and appear in spring.

Apply a bait in January to attract flies. Apply coarse drops to tree. Not a big problem in the Western Cape.



### Treatment

**Spray with a pyrethroid insecticide (eg: Biokill, Spraykill3; or organic pesticides like Kirchhoffs/Ludwigs organic insecticide, Pyrol) in September, November and January.**

**The use of synthetic pyrethroids early in season when natural enemies are present can disturb the natural balance.**

Liesbeek Parkway

Rosebank 7700

Tel: 021 6854120

Fax: 021 6853837

Email: [info@thegardencentre.co.za](mailto:info@thegardencentre.co.za)